

CERTIFICATE OF LOCATION OF GOVERNMENT CORNER

EAST QUARTER Corner of Section 21, Township 107N, Range 39W

5th Principal Meridian, State of Minnesota, County of MURRAY

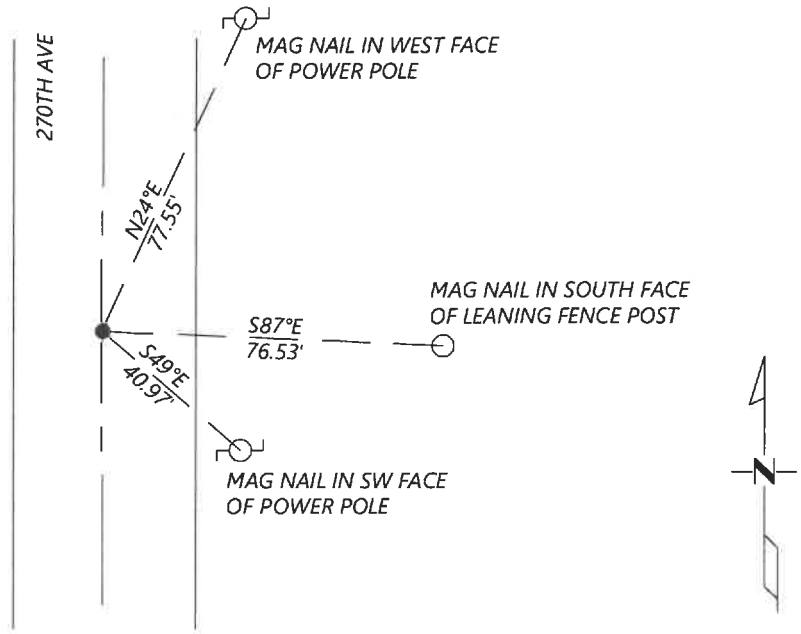
At the corner location shown on the sketch:

On 8/27/2020 found a NO. 5 REBAR WITH CAP LS23008 DOWN 0.3'
DATE

left monument as found lowered monument removed monument (explain)

On _____ placed a _____
DATE

SKETCH OF REFERENCE TIES



Statement of evidence for this corner location is on back of this page.

I hereby certify that this document was researched and prepared by me or under my direct supervision and that I am a licensed Land Surveyor under the laws of the State of Minnesota.

Signature [Handwritten Signature]

Date 6/16/2021 License No. 45874

Title:

- Land Surveyor Professional Engineer
- County Surveyor County Engineer

OFFICE OF THE COUNTY RECORDER

County of Murray

I hereby certify that this document was filed in the Co.

Recorder's office at _____ M. on the _____ day of _____ A.D. 20

County Recorder Karen Brown
by JUN 22 2021, Deputy

DOCUMENT NO. _____

*JASON LATZKE
Minnesota License No. 45874*

Statement of Evidence:

East Quarter Corner of Section 21, Township 107 North, Range 39 West, 5th Principal Meridian, Murray County, Minnesota.

July 1861 Set post in mound.

Aug. 2006 Corner Certificate filed by Perry Zeiske says he dug with a backhoe and found nothing. He set the corner (doesn't say what he set) midway and online between section corners. He lists the Murray County coordinates: N: 176701.48 E: 564167.81

Sept. 2020 Westwood Professional Services searched and found a rebar with cap LS 23008. Coordinates fit those listed on the 2006 Corner Certificate. I accepted the found monument and set reference ties.

Analysis of the recovered data, field evidence and survey measurements, indicates that the monument found is the correct perpetuation of this corner. For additional information concerning this corner please contact Westwood Professional Services.